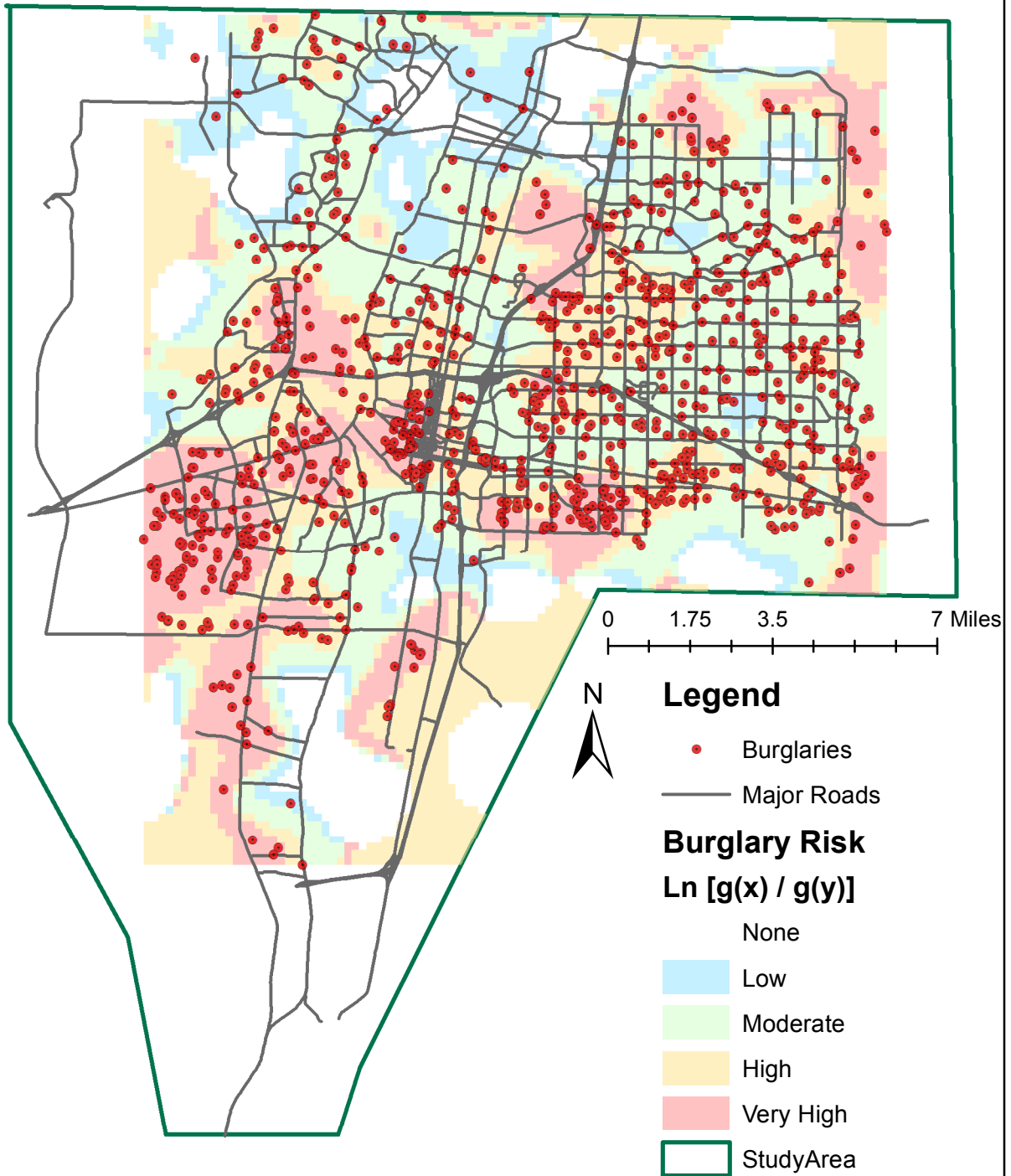


# Albuquerque, NM - Relative Burglary Risk

## 2015 Burglary and Household Data

### CrimeStat Dual Kernel Density



Note: Burglary data (10/30/2015 - 12/31/2015) only from APD.  
 Household data estimates for 2015 from Esri Demographics.  
 Relative Burglary Risk is the natural log (Ln) of the kernel density of burglaries  $g(x)$  divided by the kernel density of households  $g(y)$ .

**Preliminary Test Version**

Larry Spear, UNM - 5/30/2016  
<http://www.unm.edu/~lspear>