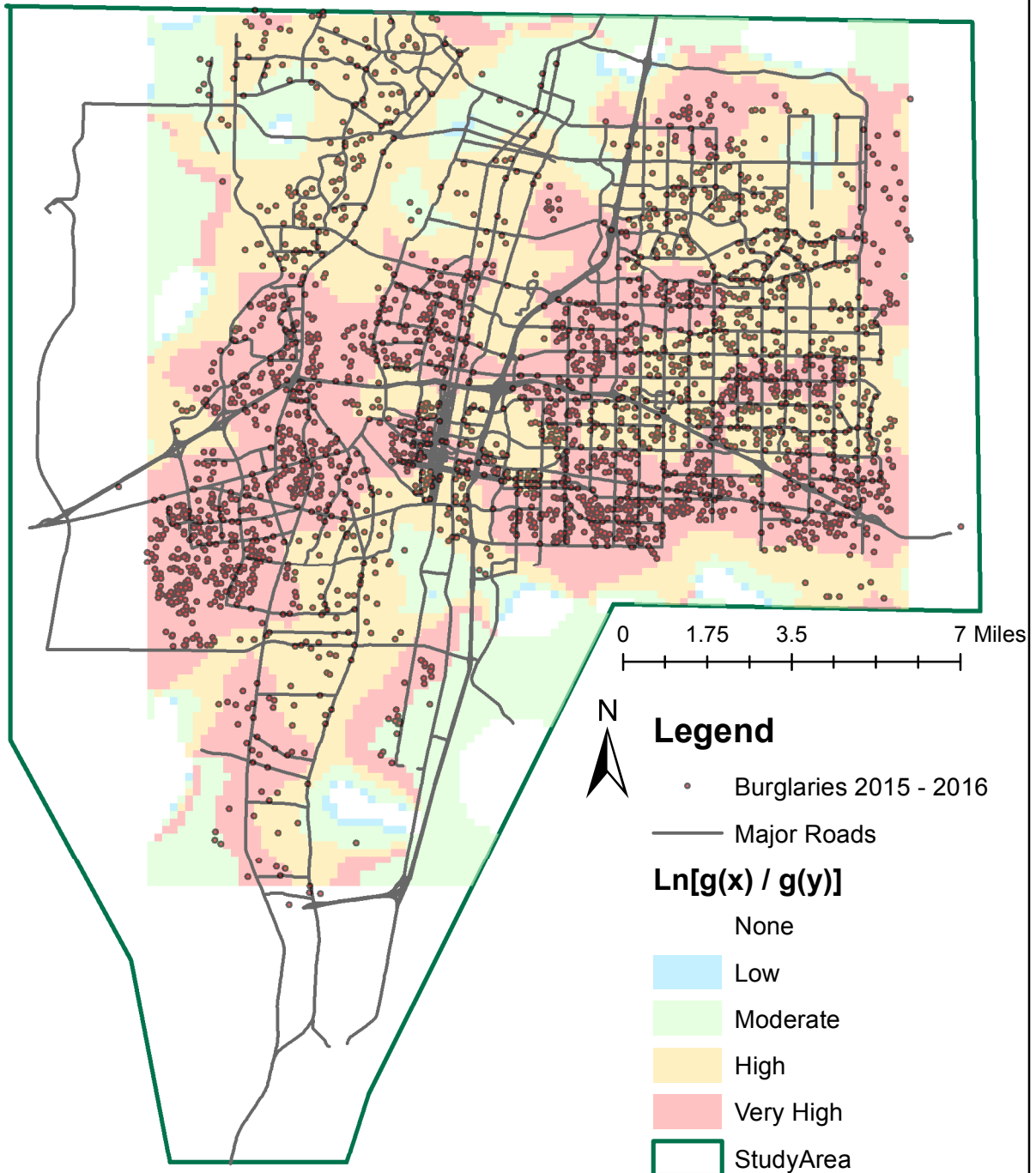


Albuquerque, NM - Relative Burglary Risk 2015 and 2016 Burglary with 2015 Household Data

CrimeStat Dual Kernel Density



Note: Burglary data (10/30/2015 - 07/07/2016) only from APD.
Household data estimates for 2015 from Esri Demographics.
Relative Burglary Risk is the natural log (Ln) of the kernel density of burglaries $g(x)$ divided by the kernel density of households $g(y)$.

Preliminary Test Version

Larry Spear, UNM - 7/09/2016
<http://www.unm.edu/~lspear>