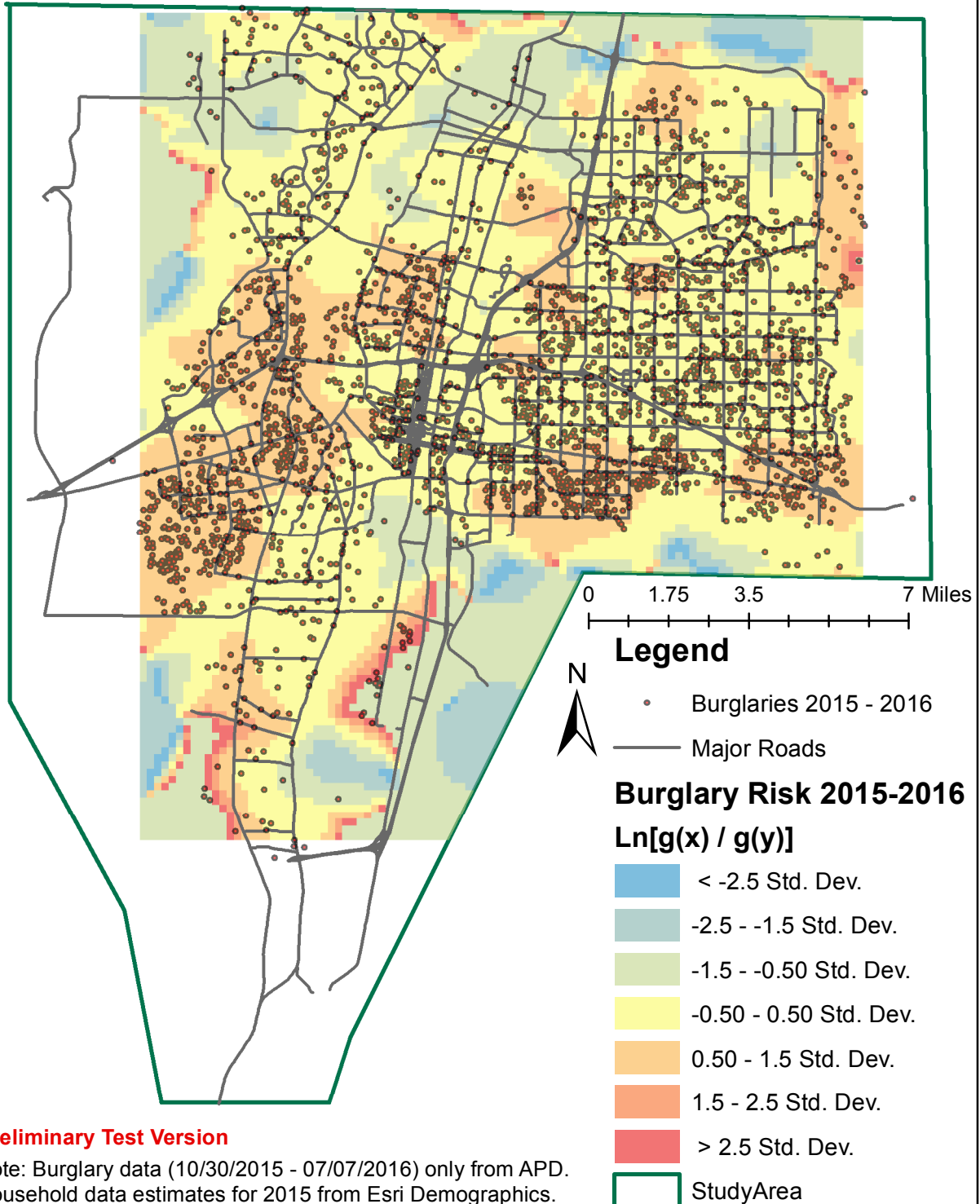


# Albuquerque, NM - Relative Burglary Risk 2015 and 2016 Burglary with 2015 Household Data

## CrimeStat Dual Kernel Density



### Preliminary Test Version

Note: Burglary data (10/30/2015 - 07/07/2016) only from APD.  
Household data estimates for 2015 from Esri Demographics.  
Relative Burglary Risk is the natural log (Ln) of the kernel density of burglaries  $g(x)$  divided by the kernel density of households  $g(y)$ .

Larry Spear, UNM - 7/27/2016  
<http://www.unm.edu/~lspear>